



# WEEHAWKEN FREE PUBLIC LIBRARY

49 Hauxhurst Avenue  
Weehawken, NJ 07086  
201-863-7823

Email: [weehcirc@bccls.org](mailto:weehcirc@bccls.org)

<https://www.weehawken-nj.us/departments/public-library>

**MAY2026**

## May the 4<sup>th</sup> Be With You

Come celebrate “**May the 4<sup>th</sup> Be with You**” at the library.

Master Yoda says “Crafts and activities there will be.”

Monday at 4:00 PM for ages 5-12

**May 4<sup>th</sup>**

Seating is limited to 20 and on a first-come, first-served basis.

## Plant Your Own Herb Garden

Parsley, sage, rosemary and thyme! Growing your own herbs is a simple and inexpensive undertaking that pays off big time for your taste buds! Learn how to plant your own herb garden at the Library this spring.

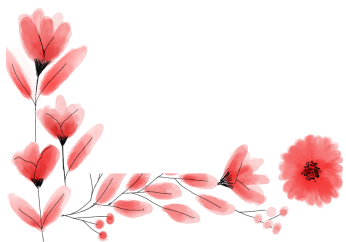
Make sure you join your fellow gardeners on

Wednesday at 7:00 PM for ages 18 & up

**May 27<sup>th</sup>**

Registration begins on May 20<sup>th</sup> .

All materials provided by the library.



## How do I use the computers & Internet?

- \* We offer free Wi-Fi password-protected access.
- \* You must bring a valid BCCLS Library card to use the public computers for up to 2 hours. 30 minutes extensions can be requested at the desk, and given at the discretion of the Library staff after 3:00 PM.
- \* Computers have MS Office and Internet access.
- \* Once you log off, all computer files are erased; make sure your documents are emailed or saved on a flash drive before ending your session.
- \* The ability to download files/software is limited.

## Museum Pass Program

Available for Weehawken Library Card Holders

Looking for something to do? The Weehawken Library is circulating passes to some of the area's most popular museums and destinations. Free passes to **Storm King Sculpture Park, The Frick Collection, The Guggenheim, the Children's Museum of Manhattan, the Montclair Art Museum, The Brooklyn Botanical Garden and The Newark Museum** are available to Adult Weehawken residents with a valid Library Card. For further Information and to obtain a pass, stop by the Library's Second Floor Desk. Passes to the American Museum of Natural History are available at a discounted price for Weehawken residents.

## Hours

Sunday: 11:00 AM-4:00 PM  
Monday: 9:00 AM-9:00 PM  
Tuesday: 9:00 AM-6:00 PM  
Wednesday: 9:00 AM-9:00 PM  
Thursday: 9:00 AM-6:00 PM  
Friday: 9:00 AM-6:00 PM  
Saturday: 9:00 AM-5:00 PM

## How do I request items?

- \* If an item you want is not available here, you may request it from another BCCLS library by placing a hold online at <http://www.bccls.org> or by calling us with your library card number.
- \* We will either call, text or email you when items are available for pick-up. Items will be held for 4 days.
- \* Contact the 2nd Floor Reference Desk to request items from other NJ libraries beyond the BCCLS system.

## How do I obtain a library card?

- \*All you need is proof you live or work in Weehawken.
  - \* Driver's license/ NJ State ID plus either a current lease, property tax bill or utility bill with Weehawken address
  - \* Letter or ID verifying Weehawken employment
- Residents can apply in person or at <http://www.bccls.org> and click on Apply for a Card.
- Children ages 6 months –14 years-old may get their own card with a parent /guardian signature.

## E-Services

Available for Weehawken Library Card Holders

- Hoopla—Residents can use their library card to access over 500,000 items via the Hoopla catalog. E-books, e-comic, e-graphic novels, downloadable audios, videos and music are available. Visit <http://hoopladigital.com> to set up a free account.
- Libby— This e-service is offered via the BCCLS catalog. Libby is a fresh and easy way to borrow e-books, downloadable audios and e-magazines. Visit [ebccls.overdrive.com](http://ebccls.overdrive.com) to set up a free account. Materials in nine different languages are offered.



# WEEHAWKEN FREE PUBLIC LIBRARY

49 Hauxhurst Avenue  
Weehawken, NJ 07086  
201-863-7823

Email: [weehcirc@bccls.org](mailto:weehcirc@bccls.org)

<https://www.weehawken-nj.us/departments/public-library>

**MAY2026**

---

## May the 4th Be With You - "Que el 4 de mayo te acompañe"

Ven a celebrar “**Que el 4 de mayo te acompañe**” en la biblioteca. El Maestro Yoda dice: “Manualidades y actividades habrá.”

Lunes a las 4:00 PM para edades de 5 a 12 años

**4 de mayo**

El cupo está limitado a 20 personas y será por orden de llegada.


## Planta tu propio jardín de hierbas

¡Perejil, salvia, romero y tomillo! Cultivar tus propias hierbas es una actividad sencilla y económica que recompensa enormemente a tu paladar. Aprende cómo plantar tu propio jardín de hierbas en la biblioteca esta primavera. Asegúrate de unirte a otros aficionados a la jardinería el

miércoles a las 7:00 PM para edades de 18 años en adelante

**27 de mayo**

La inscripción comienza el 20 de mayo. Todos los materiales serán provistos por la biblioteca.



## ¿Cómo utilizo las computadoras e internet?

Ofrecemos acceso gratuito a Wi-Fi protegido por contraseña.

Usted debe traer una tarjeta válida de Biblioteca BCCLS para usar las computadoras públicas por hasta 2 horas 30 minutos se pueden solicitar extensiones en el mostrador, y se entregan a discreción del personal de la Biblioteca después de las 3:00 PM.

Las computadoras tienen MS Office y acceso a Internet.

Una vez que cierre sesión, se borrarán todos los archivos de la computadora; asegúrese de que sus documentos se envíen por correo electrónico o se guarden en un "flash drive" antes de finalizar la sesión.

La capacidad de descargar archivos/software es limitada.

## Programa para Entradas a Museos

Disponible para titulares de tarjetas de biblioteca de Weehawken

¿Busca algo que hacer? La Biblioteca de Weehawken está circulando entradas a algunos de los museos y destinos más populares de la zona. Entradas gratuitas para el **Parque de Esculturas Storm King, la Colección Frick, el Guggenheim, el Museo Infantil de Manhattan y el Museo de Newark** están disponibles para los residentes adultos de Weehawken con una tarjeta válida de la biblioteca. Para obtener más información y obtener una entrada, pase por el mostrador del segundo piso de la biblioteca.

Las entradas para el Museo Americano de Historia Natural están disponibles a un precio con descuento para los residentes de Weehawken.

## Horarios

Domingo:	11:00AM – 4:00PM
Lunes:	9:00AM – 9:00PM
Martes:	9:00AM – 6:00PM
Miércoles:	9:00AM – 9:00PM
Jueves:	9:00AM – 6:00PM
Viernes:	9:00AM – 6:00PM
Sábado:	9:00AM – 5:00PM

## ¿Cómo solicito artículos?

\* Si un artículo que desea no está disponible aquí, puede solicitarlo a otra biblioteca de BCCLS separándolo en línea en <http://www.bccls.org> o llamándonos con su número de tarjeta de la biblioteca.

\* Le llamaremos, le enviaremos un mensaje de texto o un correo electrónico cuando los artículos estén disponibles para recoger. Los artículos se retendrán durante 4 días.

\* Póngase en contacto con el mostrador de referencia del 2do piso para solicitar artículos de otras bibliotecas de NJ más allá del sistema BCCLS.

## ¿Cómo obtengo mi tarjeta de biblioteca?

Todo lo que necesita es prueba de que vive o trabaja en Weehawken.

- Licencia de conducir / ID del estado de NJ más un contrato de arrendamiento actual, factura de impuestos a la propiedad o factura de servicios públicos con dirección de Weehawken

- Carta o identificación que verifica el empleo en Weehawken

Los residentes pueden presentar su solicitud en persona o en <http://www.bccls.org> y hacer clic en Apply for a Card.

Los niños de 6 meses a 14 años pueden obtener su propia tarjeta con la firma de un padre / tutor.

## Servicios-E

Disponible para los titulares de la tarjeta de la biblioteca de Weehawken

Hoopla - Los residentes pueden usar su tarjeta de la biblioteca para acceder a más de 500,000 artículos a través del catálogo de Hoopla. E-books, e-comic, novelas e-gráficas, audios descargables, videos y música están disponibles. Visita <http://hoopladigital.com> para crear una cuenta gratuita.

Libby - Este servicio electrónico se ofrece a través del catálogo BCCLS. Libby es una forma fresca y fácil de pedir prestados libros electrónicos, audios descargables y revistas electrónicas. Visita [ebccls.overdrive.com](http://ebccls.overdrive.com) para crear una cuenta gratuita. Se ofrecen materiales en nueve idiomas diferentes.

# Children's Programs



## **New Jersey Destinations Interactive Program**

Visit the Library to test your knowledge of New Jersey sites. Throughout May children ages 5-12 can participate in an interactive trivia contest to win a small prize, while supplies last.

### **Mother Goose Story Time**

This interactive story time will engage children through books, songs and rhymes.

Friday at 10:30 AM for ages up to 4

**May 1<sup>st</sup>**

Seating is limited to 15 and on a first-come, first-served basis.

### **Story Time Saturday**

Begin your weekend by joining Mr. Tree and his friends for a story and a craft.

Saturdays at 10:30 AM for ages 2-4

**May 2<sup>nd</sup> , May 9<sup>th</sup> , May 16<sup>th</sup> and May 30<sup>th</sup>**

Seating is limited to 15, on a first-come, first-served basis and is for Weehawken residents only.

### **Story Time Tuesday**

Children are invited to join Mr. Tree and their friends for a story and a craft.

Tuesdays at 10:30 AM for ages 2-4

**May 5<sup>th</sup> , May 12<sup>th</sup> and May 19<sup>th</sup>**

Seating is limited to 15, on a first-come, first-served basis and is for Weehawken residents only.

### **Children's Graphic Novel and Comic Club**

Comic fans and those who want to learn about them, this club is for you! Join other fans for a lively discussion of all topics about comics.

Wednesday at 4:00 PM for ages 7-12

**May 6<sup>th</sup>**



### **Baby and Me**

This program allows the youngest members of our community to interact with each other while enjoying free play, music and more.

Thursdays at 10:30 AM for ages 6 -23 months

**May 7<sup>th</sup> , May 14<sup>th</sup> , May 21<sup>st</sup> and May 28<sup>th</sup>**

Seating is limited to 15, on a first-come, first-served basis and is for Weehawken residents only.

### **Book Enders Book Club**

Early readers can join their friends to discuss

**Ahoy! by Sophie Blackall**

Monday at 4:00 PM for ages 7-8

**May 11<sup>th</sup>**

### **Seasonal Stories**

Celebrate the changing seasons with entertaining stories.

Tuesday at 4:00 PM for ages 3-6

**May 12<sup>th</sup>**

### **Crafty Kids**

Love to paint, draw and more? Join us for seasonal craft projects.

Wednesday at 4:00 PM for ages 5-11

**May 13<sup>th</sup>**

Seating is limited to 20 and on a first-come, first-served basis.

### **Novelist Book Club**

Children are invited to join their friends to discuss

**Minerva Keen's Detective Agency by James Patterson**

Monday at 4:00 PM for ages 9-12

**May 18<sup>th</sup>**

### **Bottles, Binkies and Books**

The Library's youngest patrons will be entertained with stories and interactive music.

Friday at 10:30 AM for ages up to 4

**May 29<sup>th</sup>**

Seating is limited to 15, on a first-come, first-served basis.



## Teen Programs

### Teen Challenge: Twister

Get ready to twist, turn, and laugh out loud at our Library Life-Sized Twister Extravaganza!

Sunday at 1:00 PM for Grades 7<sup>th</sup> -12<sup>th</sup>

**May 10th**

Seating is limited to 15, on a first-come, first-served basis.

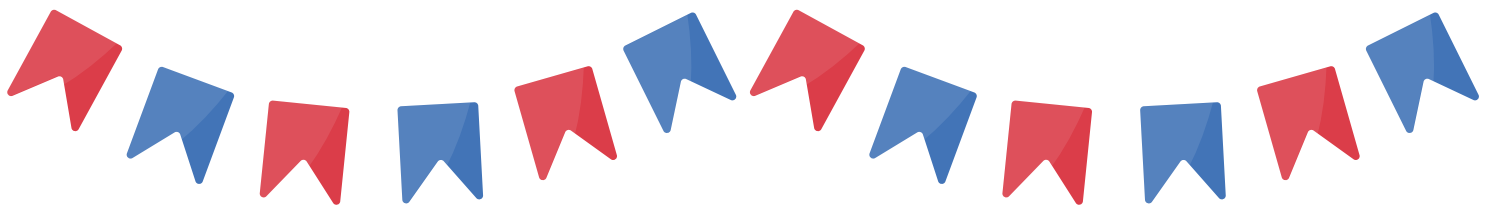
### Salty and Sweet Book Club

Teens are invited to visit the Library and “Rant and Rave” about books they have recently read.

Monday at 7:00 PM for Grades 7-12

**May 18<sup>th</sup>**





## Adult Programs at the Library

### Conversational ESL Classes

The Library is offering this program for adults for whom English is not their primary language. Sessions will include guided conversation as well as time to practice freely in a casual, relaxed environment. These beginner level sessions are open to Weehawken residents only and are limited to 15 participants.

**May 6<sup>th</sup> , May 20<sup>th</sup> and May 27<sup>th</sup>**

Ages 18 & up.

Registration is required

### Afternoon Movies at the Library

Adults are invited to the Library to watch a movie.

Friday at 1:00 PM for ages 18 & up

**May 8<sup>th</sup>**

**Springsteen: Deliver Me From Nowhere**

The Library's Community Room

### Adult Evening Book Group

The discussion is expected to last between 60 to 90 minutes and is geared towards adults. Stop by the Library's first floor circulation desk to pick-up your copy in advance.

Monday at 7:00 PM for ages 18 & up

**May 11<sup>th</sup>**

**Hamnet by Maggie O'Farrell**

2<sup>nd</sup> Floor Round Room

### Adult History Trivia

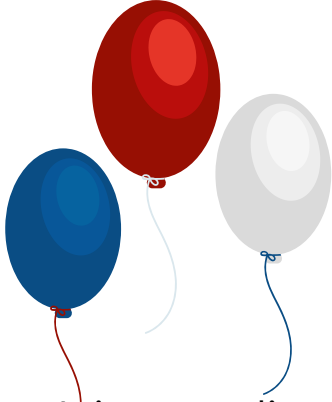
Celebrate the 250<sup>th</sup> Anniversary of the United States by testing your knowledge in categories such as Presidential History, United States geography and more.

Wednesday at 7:00 PM for ages 18 & up

**May 13<sup>th</sup>**

Seating is limited to 20, on a first-come, first-served basis.

The Library's Community Room



### ***Science Fiction/Fantasy Book Club***

Join us to discuss your favorite characters and scenes from this book, other books and speculate on future events. Stop by the Library's first floor circulation desk to pick-up your copy and read in advance.

Monday at 7:00 PM for ages 18 & up

**May 18<sup>th</sup>**

**Dungeon Crawler Carl by Matt Dinniman**

**2<sup>nd</sup> Floor Round Room**

### **Adult Craft**

It's finally May and the Weehawken Library's crafting community is all about the hot new trend of bedazzling books! Breathe new life into a well-loved favorite book or make a new classic's cover shine!

Participants must bring their own book to bedazzle.

All other materials  
provided by the library.

Wednesday at 7:00 PM for ages 18 & up

**May 20<sup>th</sup>**

Seating is limited to 15 and registration begins on Wednesday, May 13<sup>th</sup> .

**The Library's Community Room**

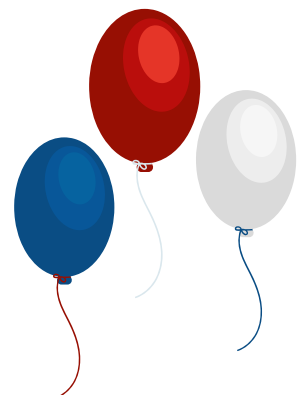
### **Knitting and Crocheting Hour**

Knit and crochet with others! Get inspired, get tips, or finish up a forgotten project. All skill levels are welcome.

Thursday at 10:00 AM for ages 18 & up

**May 21<sup>st</sup>**

**2<sup>nd</sup> Floor Round Room**



# May at a Glance

Sunday	Monday	Tuesday	Wednesday	Thursday	Friday	Saturday
<p>Programs for ages up to 4.</p> <p>Programs for ages 5-12.</p> <p>Programs for Grades 7-12.</p> <p>Programs for ages 18 &amp; up</p>					<p><b>1</b></p> <p>Mother Goose Story Time Ages: Up to 4 10:30 AM First-come, first served limited to 15.</p>	<p><b>2</b></p> <p>Story Time Saturday Ages: 2-4 10:30 AM First-come, first served limited to 15.</p>
<p><b>3</b></p>	<p><b>4</b></p> <p>May the 4<sup>th</sup> Be With You Ages: 5-12 4:00 PM First-come, first served limited to 20.</p>	<p><b>5</b></p> <p>Story Time Tuesday Ages: 2-4 10:30 AM First-come, first served limited to 15</p>	<p><b>6</b></p> <p>Children's Graphic Novel and Comic Club Ages: 7-12 4:00 PM</p> <p>Conversational ESL Ages: 18 &amp; up 7:00 PM Registration is required and seating is limited to 15.</p>	<p><b>7</b></p> <p>Baby and Me Ages: 6-23 mons. 10:30 AM First-come, first served limited to 15.</p>	<p><b>8</b></p> <p>Afternoon Movie: Springsteen: Deliver Me From Nowhere Ages: 18 &amp; up 1:00 PM</p>	<p><b>9</b></p> <p>Story Time Saturday Ages: 2-4 10:30 AM First-come, first served limited to 15.</p>
<p><b>10</b></p> <p>Teen Challenge: Giant Twister Grades 7<sup>th</sup> - 12<sup>th</sup> 1:00 PM First-come, first-served limited to 15.</p>	<p><b>11</b></p> <p>Book Enders Book Club Ages: 7-8 4:00 PM</p> <p>Adult Book Club Ages: 18 &amp; up 7:00 PM</p>	<p><b>12</b></p> <p>Story Time Tuesday Ages: 2-4 10:30 AM First-come, first served limited to 15.</p> <p>Seasonal Stories Ages: 3-6 4:00 PM</p>	<p><b>13</b></p> <p>Crafty Kids Ages: 5-11 4:00 PM First-come, first served limited to 20.</p> <p>Adult History Trivia Ages: 18 &amp; up 7:00 PM First-come, first-served limited to 20.</p>	<p><b>14</b></p> <p>Baby and Me Ages: 6-23 mons. 10:30 AM First-come, first served limited to 15.</p>	<p><b>15</b></p>	<p><b>16</b></p> <p>Story Time Saturday Ages: 2-4 10:30 AM First-come, first served limited to 15.</p>
<p><b>17</b></p>	<p><b>18</b></p> <p>Novelist Book Club Ages: 9-12 4:00 PM</p> <p>Salty and Sweet Book Club Grades: 7-12 7:00 PM</p> <p>Sci-Fi/Fantasy Book Club Ages: 18 7 up 7:00 PM</p>	<p><b>19</b></p> <p>Story Time Tuesday Ages: 2-4 10:30 AM First-come, first served limited to 15.</p>	<p><b>20</b></p> <p>Conversational ESL Ages: 18 &amp; up 7:00 PM Registration is required and seating is limited to 15.</p> <p>Adult Craft Ages: 18 &amp; up 7:00 PM Registration is required and seating is limited to 15.</p>	<p><b>21</b></p> <p>Knitting and Crocheting Hour Ages: 18 &amp; up 10:00 AM</p> <p>Baby and Me Ages: 6-23 mons. 10:30 AM First-come, first served limited to 15.</p>	<p><b>22</b></p>	<p><b>23</b></p>
<p><b>24</b></p>	<p><b>25</b></p> <p>The Library is closed for Memorial Day.</p>	<p><b>26</b></p>	<p><b>27</b></p> <p>Conversational ESL Ages: 18 &amp; up 7:00 PM Registration is required and seating is limited to 15.</p> <p>Plant Your Own Herb Garden Ages: 18 &amp; up 7:00 PM Registration is required and seating is limited to 15.</p>	<p><b>28</b></p> <p>Baby and Me Ages: 6-23 mons. 10:30 AM First-come, first served limited to 15.</p>	<p><b>29</b></p> <p>Bottles, Binkies and Books Ages: Up to 3 10:30 AM First-come, first served limited to 15.</p>	<p><b>30</b></p> <p>Story Time Saturday Ages: 2-4 10:30 AM First-come, first served limited to 15.</p>
<p><b>31</b></p>						

# **WEEHAWKEN FREE PUBLIC LIBRARY BOARD OF TRUSTEES**

**President Leona M. Nersesian**

**Vice President Noelle Welz**

**Secretary Clara Puello**

**Treasurer John C. Meditz**

**Trustee Elia Alvarez**

**Trustee Chayanne R. Moya**

**Trustee Elizabeth Mulcahy**

**The Honorable Mayor Richard F. Turner**

**Francesca Amato, Assistant Superintendent of Schools**

**Holly L. Pizzuta, Librarian/Director of Administration and  
Operations**

**Kelly Fitzgerald, Librarian/Director of Library Services and  
Programs**

